



CARE . TRUST . RESPONSIBILITY

M3a-2

VERSATILE ANDROID ENTERPRISE TABLET



Whether you are looking for a tablet for line busting, in-aisle customer assisting, or point of sale (POS) capabilities for your field sales or service team, Partner Tech's Android-based M3a-2 Enterprise Tablet is the perfect choice. The M3a-2 keeps your staff connected to the business applications they need without being tethered to a checkout counter and allows them to provide service without making customers wait in line.

Employee-Friendly Operating System

Your employees are likely to be familiar with the popular Android OS, so it's easy for them to use the M3a-2 to perform their jobs accurately and efficiently. It's also easy to train employees on the intuitive OS, which means new hires can work independently and start contributing value to your business from day one.

Rugged and Hardworking

The M3a-2 is built to withstand harsh conditions. It has been tested to keep performing even after a 3-foot (1 meter) fall to a hard surface, and it has an IP54 rating for protection against damage from water spill. With a design that minimizes downtime and repair costs, the rugged M3a-2 keeps your operations going.

SPECIAL FEATURES

- Android 7.1 operating system
- Qualcomm Octa-core
- Wireless communication capabilities
- IP54
- Easy all-day use for indoor and outdoor
- Variable and flexible functionality by options

OPTIONAL

- 2D Barcode scanner
- Encryption-capable MSR, EMV reader, Bio reader
- WWAN communication
- POS Base
(Charging, LAN, USB, Cash drawer and Com port)

M3a-2

| Item | M3a-2 | | |
|-----------------------------------|--|----------------------------------|----------------------------------|
| CPU | Qualcomm Octa-core APQ8053 | | |
| Display | Size 10.1" Resolution:800 x1280 | | |
| Touch | Projected capacitive touch (Multi Touch) | | |
| RAM | 4GB | | |
| Storage | eMMC 32GB | | |
| I/O Interfaces | 1 x USB 2.0 TYPE A 1 x SIM slot | 1 x Micro SD card 1 x DC Jack | 1 x Micro HDMI 1 x Audio Jack |
| Operating System | Android 7.1 | | |
| RFID / NFC | 13.56MHz, ISO 14443A/14443B/15693 | | |
| Wireless Communication | WLAN 802.11 a/b/g/n/ac | | |
| | BT4.2 | | |
| WWAN (option) | Data communication GPRS/EDGE/WCDMA/4G LTE(Module: Quectel_EC25 series) | | |
| GPS (option) | supports GPS, Glonass & AGPS | | |
| Camera | Front Camera: 2.0Mega pixel | | |
| | Rear Camera: 8.0Mega pixel Auto Focus | | |
| Speaker | Internal, 2x 2W | | |
| Power Adapter | Input:100V to 240V AC 50/60Hz 1A | | |
| | Output: DC 12V/3A | | |
| Battery | Rechargeable Li-ion battery 7.4V, 4600mAh, Working Time 6.0 hours | | |
| Hot swap Battery | 3.8V/250 mA, Hot swap time 5 minute | | |
| IP-Class | IP54 | | |
| Drop Resistance | 3 Foot (1meter) | | |
| Environment | Operating: | | Storage: |
| | Temperature: | 0°C ~ +40°C | -20°C ~ 60°C |
| | Humidity: | 5% ~ 95% | 5% ~ 95% |
| Dimensions | 278mm x 199mm x 24.2mm (W/H/D) | | |
| Weight | approx. 950g (with battery) | | |
| Optional Modules (factory option) | Encryption-capable MSR, EMV reader, Bio reader, | | |
| Additional devises | 2D BCR, POS Base | | |

*Specification is subject to change without prior notice



10.1" with auto rotation function
Integrated NFC reader



Rotatable 2D barcode scanner



Integrated Bio reader (Optional)

POS Base for M3a-2



Adjustable POS Base and flip up to 135 degrees at customer-end (X3-10/20)

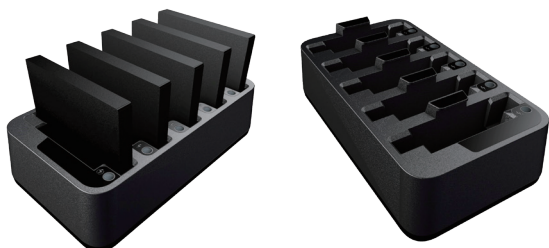


Patented keylock-free design Rotatable 2D barcode scanner (X3-10/20)

| Item | X3-10 | X3-20 |
|---------------------|------------------|--------------------------|
| Mechanism | POS Base Mini | POS Base Mini |
| USB | 4 | 4 |
| COM | 4 | 4 |
| Ethernet | 1 | 1 |
| Cash Drawer | 1 | 1 |
| DC in | 12V 7.5A 90W | 12V 15A 180W |
| Power USB | X | 1*12V 1.5A 1*24V 2.3A |
| Dimension WxDxH(mm) | 278*225.25*321.1 | |

*Specification is subject to change without prior notice

Battery Charging cradle CBE-1



| Item | CBE-1 |
|--------------------|--|
| Fast charge slot | 1 |
| Normal charge slot | 4 |
| LED | Charging: Red Full charged: Green |
| Adaptor | 12V/10A |
| Charging Time | Fast charge : 2 hr (8.4V / 2.0A) Normal charge : 3.5 hr (8.4V / 1.4A) |

*Specification is subject to change without prior notice