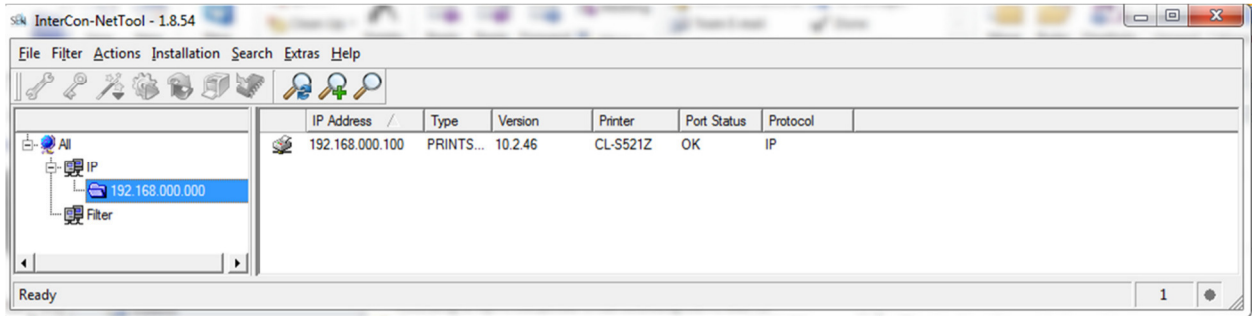


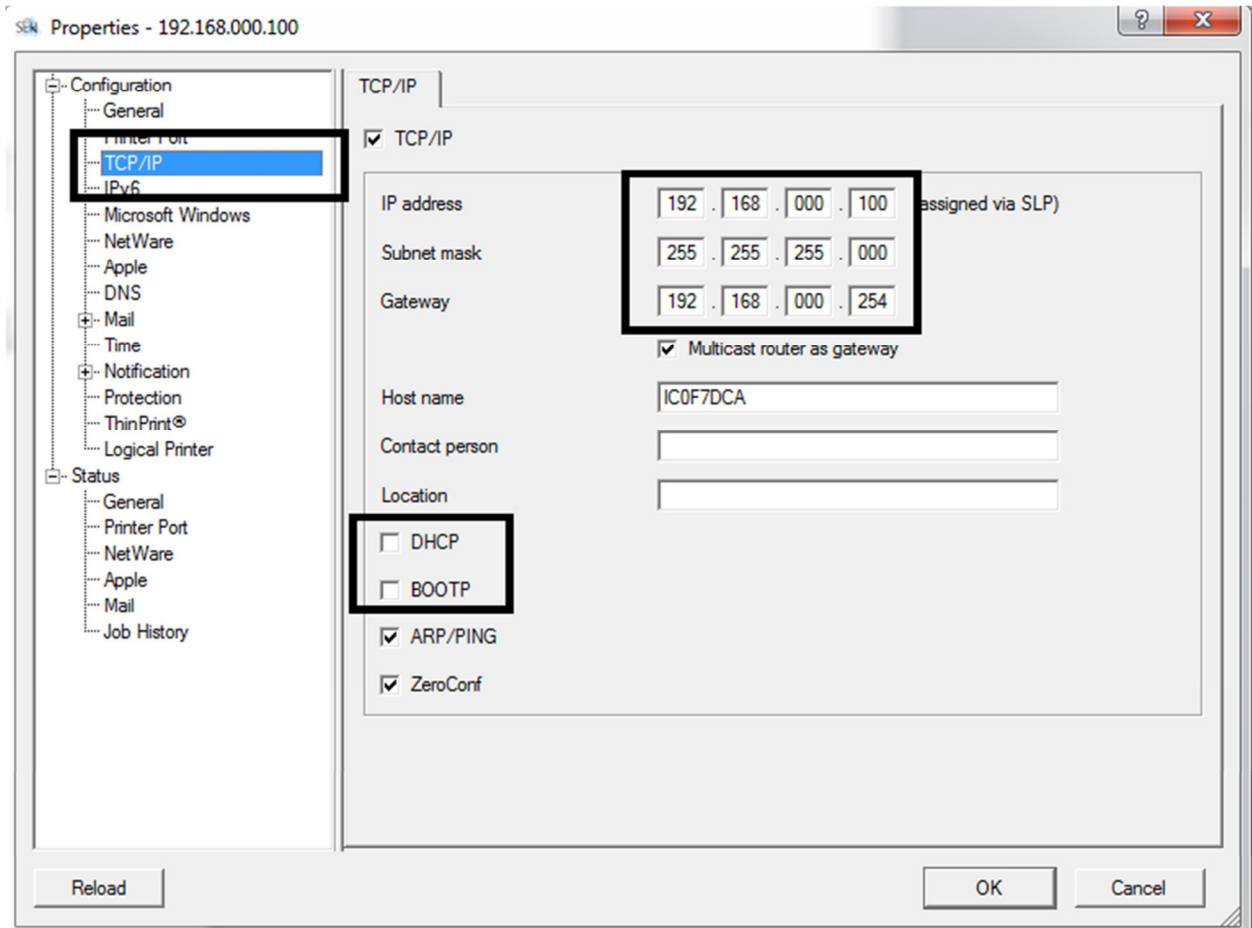
## Citizen CT-S4000 CBORD Configuration

### Configuring the Network Card Option 1 – Using the InterCon-NetTool Utility

With the CT-S4000 connected to your network power up the printer and wait 10-15 seconds. The Print Server should get an IP address from your DHCP server (it's pre-configured to support DHCP). Install and run the network utility InterCon-NetTool. You should see the Print Server come up like the screen below.



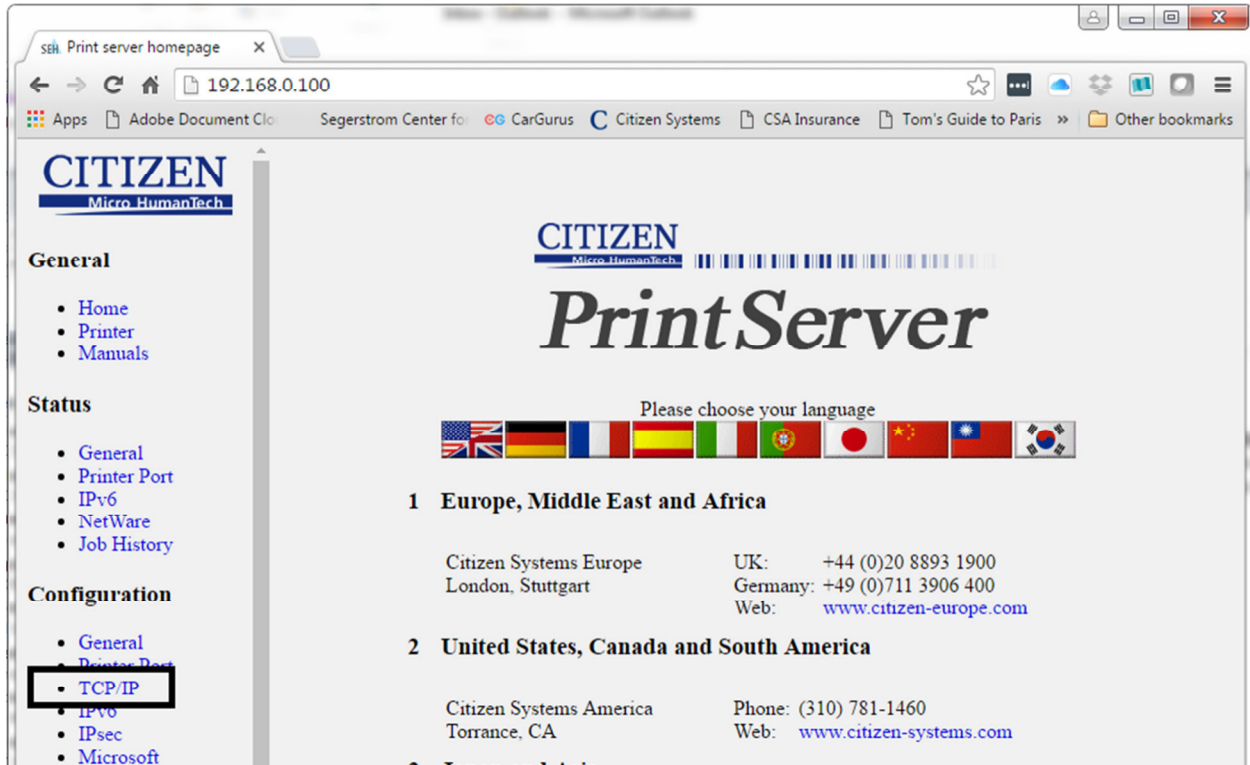
For Static IP configurations: Double-Click the IP Address and after the properties are loaded select TCP/IP. Enter the IP, Subnet mask, and Gateway for your static IP Print Server then de-select DHCP and BOOTP and select OK to save the settings. Once the settings are saved you can select Refresh or Rebuild to verify the changes.



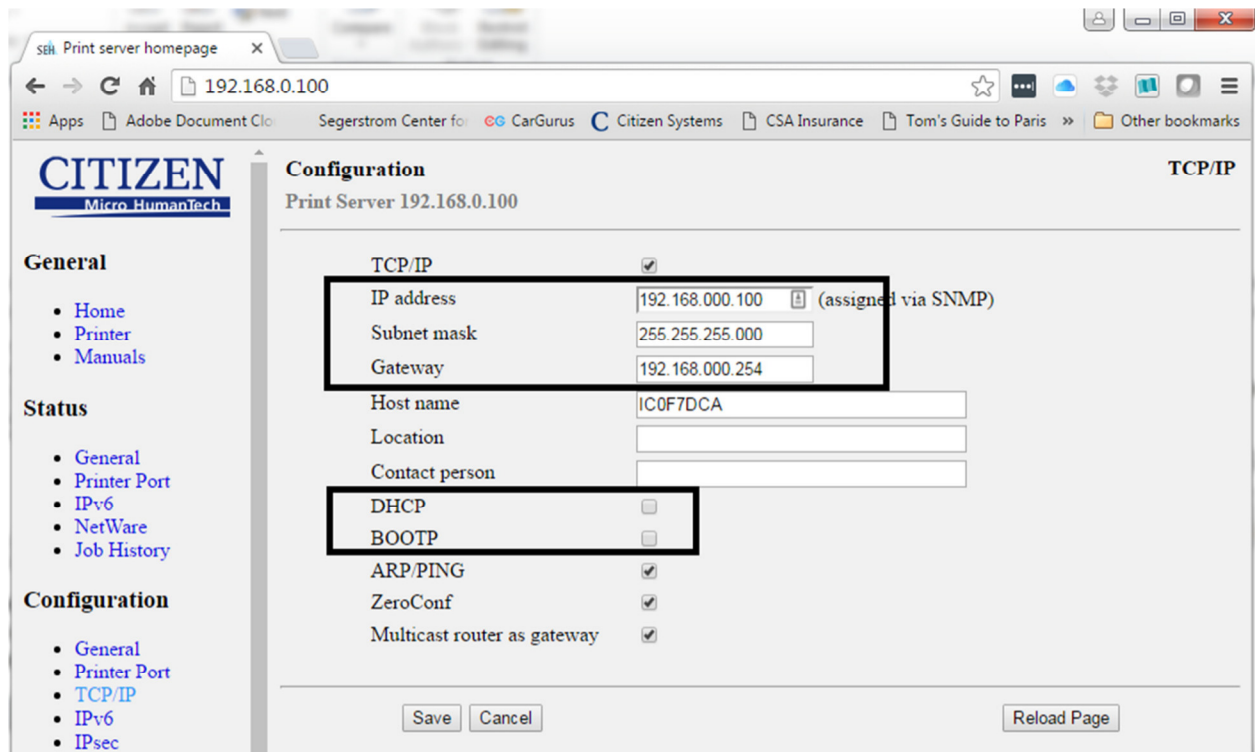
## Configuring the Network Card Option 2 – using a Browser

With the CT-S4000 connected to your network power up the printer and wait 10-15 seconds. The Print Server should get an IP address from your DHCP server. Press the NIC Test button. The Network Configuration should print with a valid IP/Subnet Mask/Gateway.

Open your browser and type in the Print Server's IP address. You should see the Citizen Print Server screen. Select TCP/IP under Configuration.



For Static IP configurations: Enter the IP, Subnet mask, and Gateway for your static IP Print Server then deselect DHCP and BOOTP and select "Save" to save the settings. Once the settings are saved you can type in the new IP address in the browser to verify the changes.



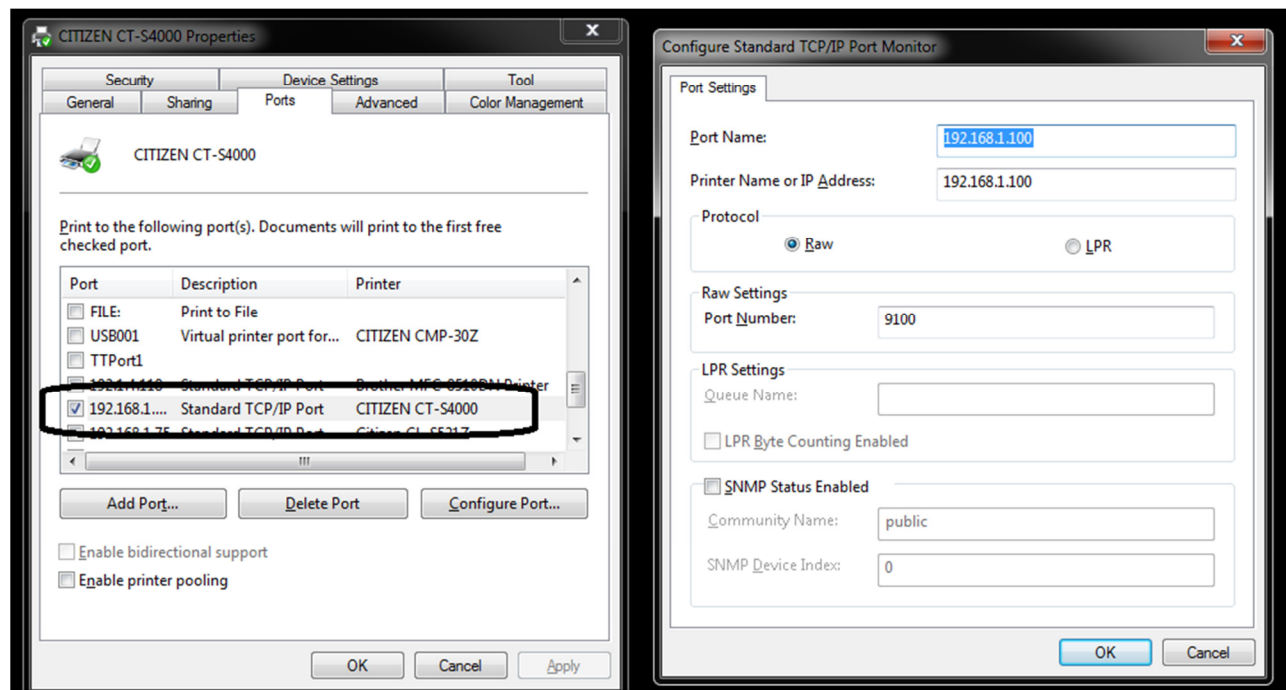
## Loading/Configuring the CT-S4000 Windows Driver

Load version 3.3 CT-S4000 Windows driver.

Download location:

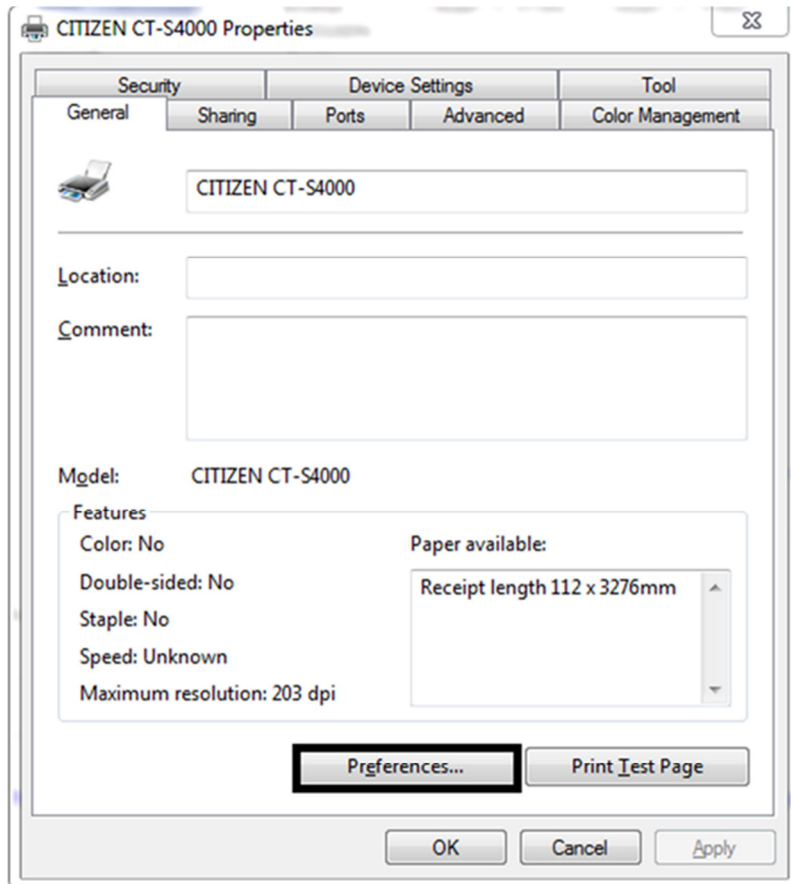
<https://www.dropbox.com/sh/y73lxwrk8ocs82s/AAD7fV9EK1z0Pt9paROKJ16Ya?dl=0>

Make sure the port is configured for "Standard TCP/IP Port" setting.

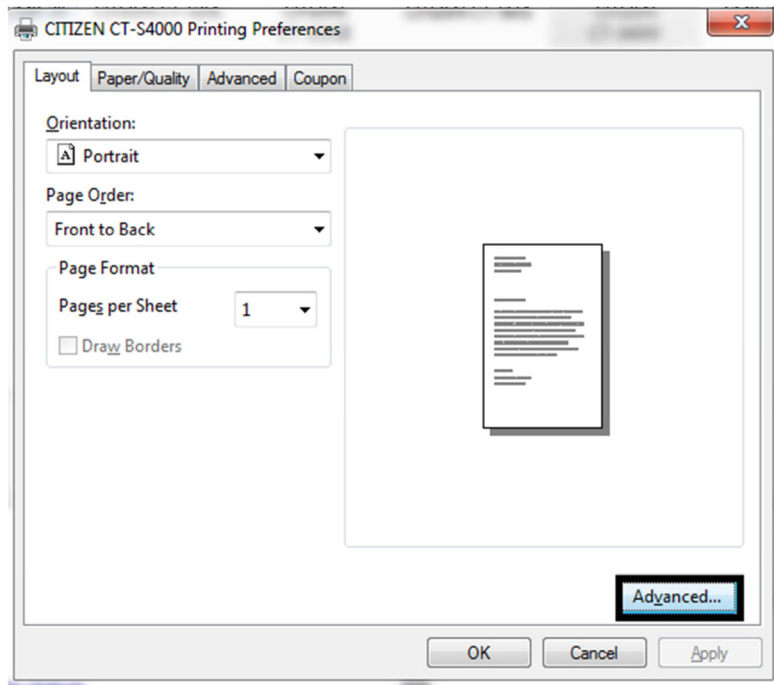


If having no cut between patient and guests is desired, please follow the instructions below:

Open the CT-S4000 Driver properties and select Preferences in the General tab.



In the Layout tab select Advanced.



In the Cutter Mode select "No Cut/Partial Cut" and then press Ok. Then select Apply to save the setting.

