

CITIZEN

CT-S4500ECB CBORD  
Configuration Manual

## Configuring the Network Card

With the CT-S4500 connected to your network, power up the printer and wait 10-15 seconds. The printer should get an IP address from your DHCP server. Press the button on the NIC card. The printer should print a Network Configuration with a valid IP, Subnet Mask and Gateway.

Open your browser and type in the printer's IP address. You should see the Citizen Systems LAN board screen. Select the CONFIG tab. Below is the default username and password. This can be changed and configured here as well (*see page 8*).

Username : admin  
Password : admin

### I/F Board Information

IF2-EFX1(Rev1.1.2): Ver 1.00

#### System

LAN Board Name : Net Printer  
Serial Number : 17113000128  
MAC Address : 00:11:e5:07:b9:86

#### Current Network Status

IP Address : 10.0.0.19 (DHCP)  
Subnet Mask : 255.255.255.0  
Gateway : 10.0.0.1  
DHCP Server : 10.0.0.1

#### Ethernet Status

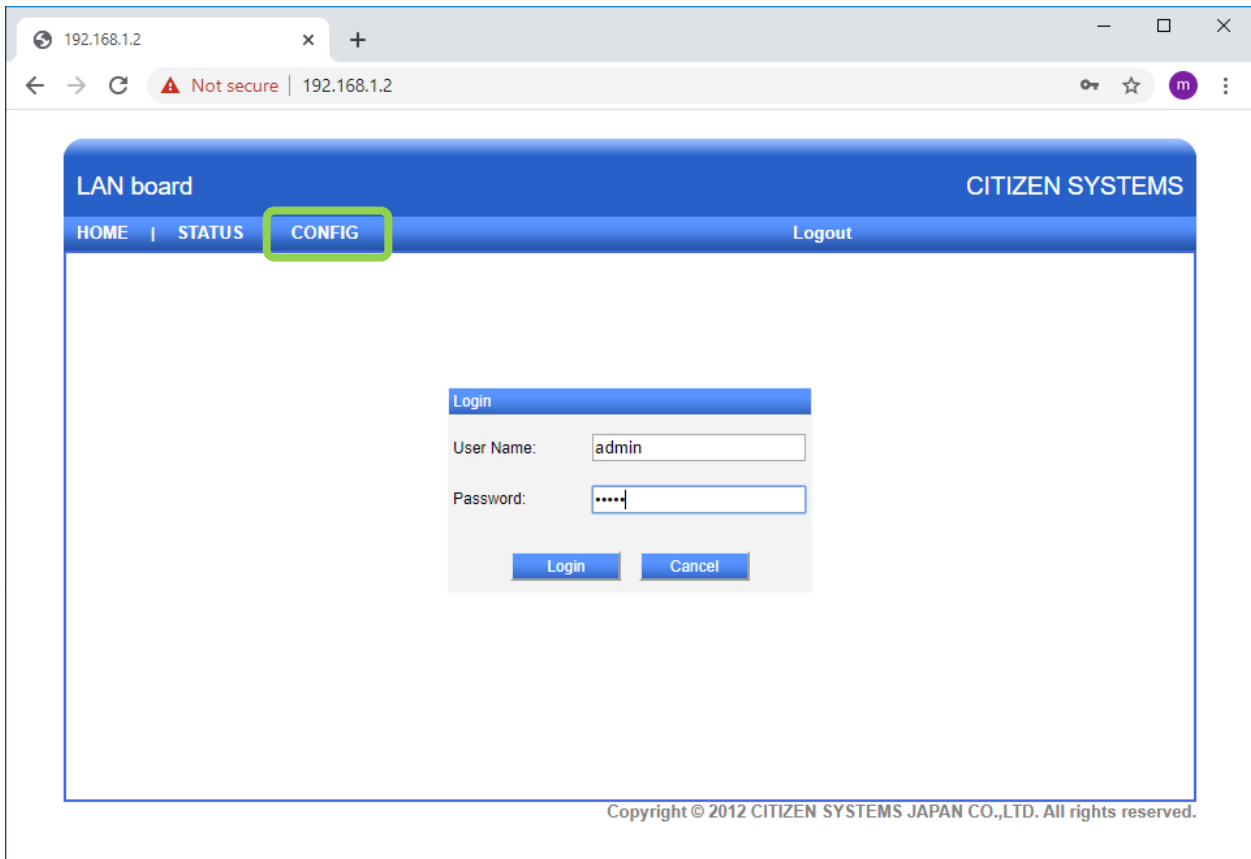
Speed & Duplex : Auto (100BaseTx Full)

#### Printer Status

Manufacturer : CITIZEN  
Model : CT-S4500ECB

#### User Configuration

DHCP : Enable  
IP Address : 192.168.10.100  
Subnet Mask : 255.255.255.0  
Gateway : 192.168.10.100  
Print Port : 9100  
Receive Timeout : 180



For static IP configurations, select the “Use the following IP Address” radio button. Enter the desired IP, Subnet Mask, and Gateway address for your static IP then press “Submit”.

(!) Please note that this DOES NOT save the configuration yet. There are a few more steps to complete before the changes are implemented.

LAN board CITIZEN SYSTEMS

HOME | STATUS | CONFIG Logout

General Service User Account Maintenance

LAN board Information

LAN board name Net Printer 15 letters[max.]

TCP/IP

Obtain an IP Address Automatically

Use the following IP Address

IP Address 192.168.1.2 15 letters[max.]

Subnet Mask 255.255.255.0 15 letters[max.]

Default Gateway 192.168.1.1 15 letters[max.]

UPnP Setting

UPnP  Enable  Disable

Print Settings

Raw Port Number 9100

Timeout for print data 180 0-65535[Seconds]

Action at Timeout  Close all connections  Move to next connection

Submit Reset

Copyright © 2012 CITIZEN SYSTEMS JAPAN CO.,LTD. All rights reserved.

LAN board CITIZEN SYSTEMS

HOME | STATUS | CONFIG Logout

General Service User Account Maintenance

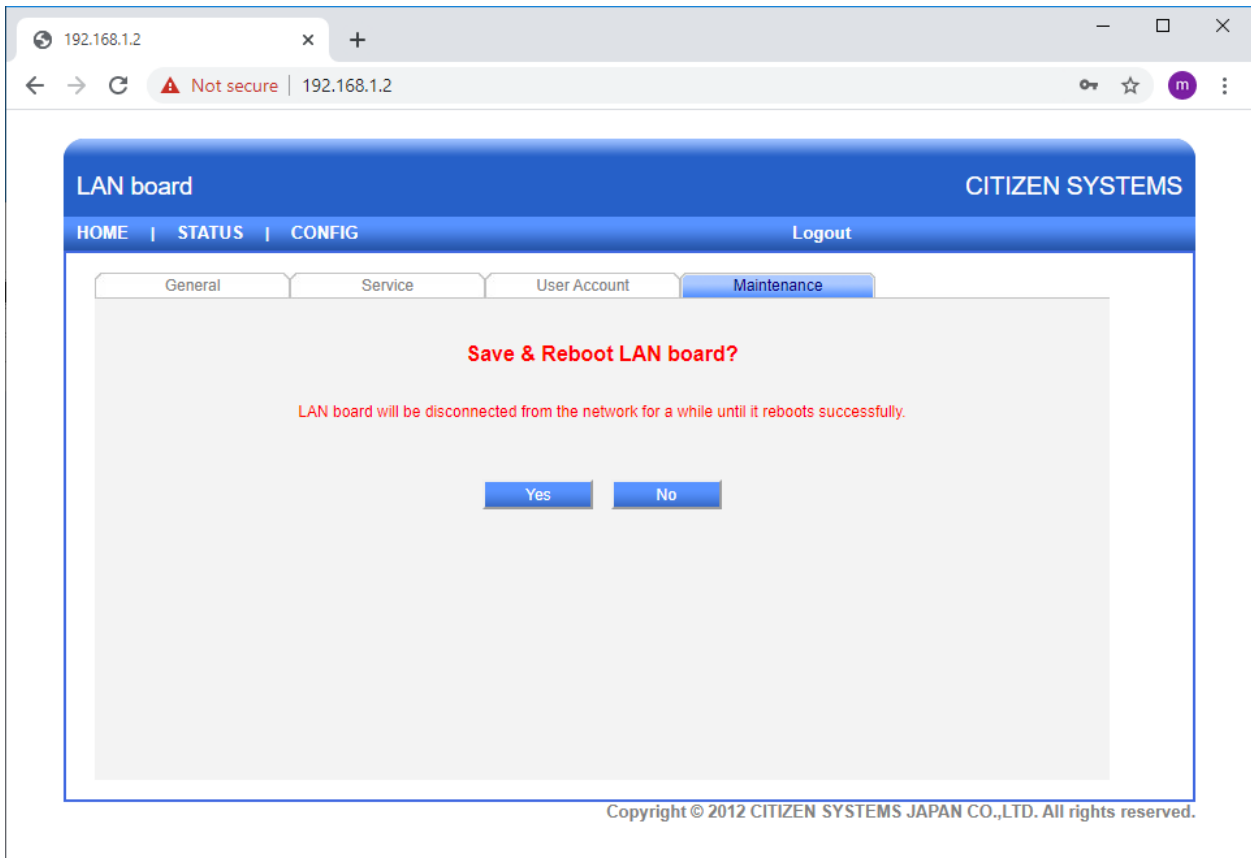
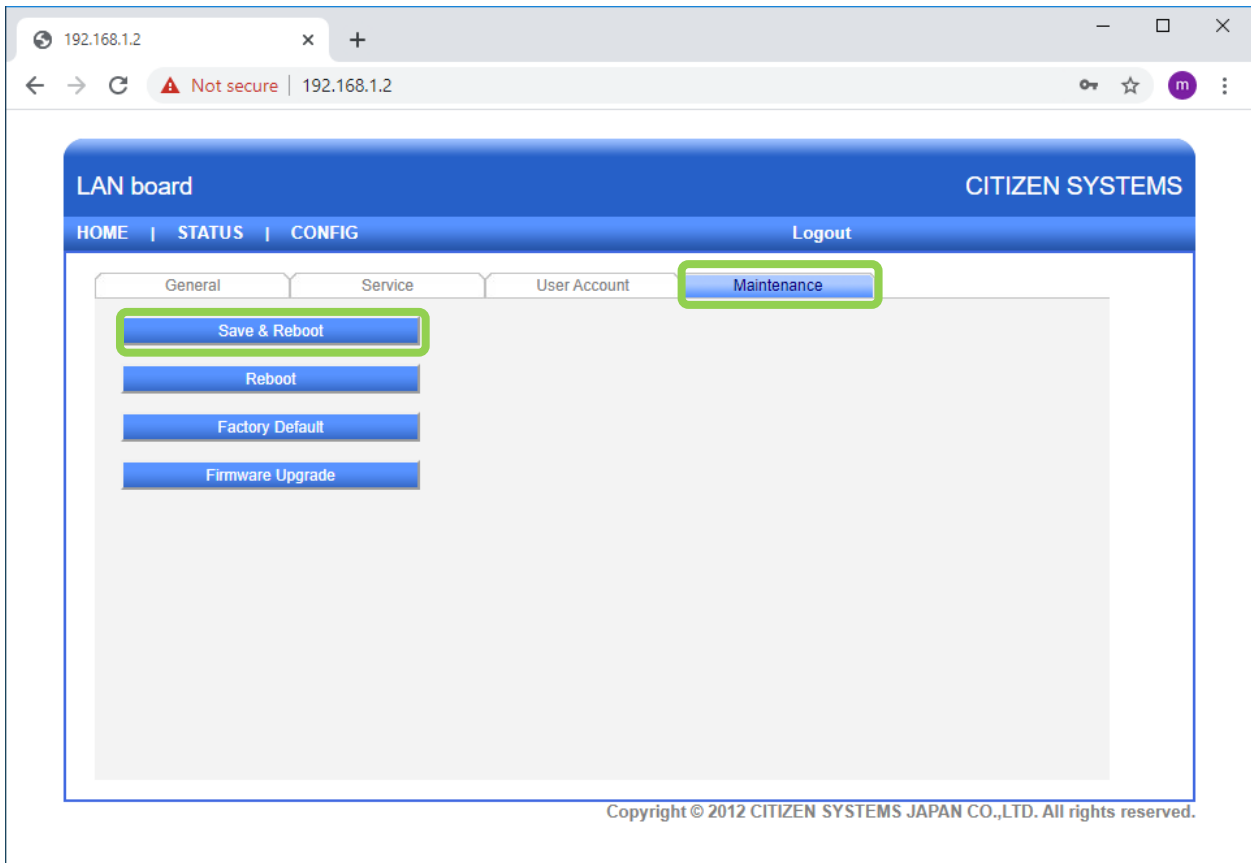
Save Settings

Change settings will be discarded unless "Save & Reboot" button in "Maintenance" tab is pressed.

OK

Copyright © 2012 CITIZEN SYSTEMS JAPAN CO.,LTD. All rights reserved.

Go to the “Maintenance” tab and press “Save & Reboot” button to save the configuration changes. This will automatically restart the printer.



192.168.1.2 x +

← → ↻ ⚠ Not secure | 192.168.1.2 🔑 ☆ m ⋮

LAN board CITIZEN SYSTEMS

HOME | STATUS | CONFIG Logout

General Service User Account **Maintenance**

System Restarting!

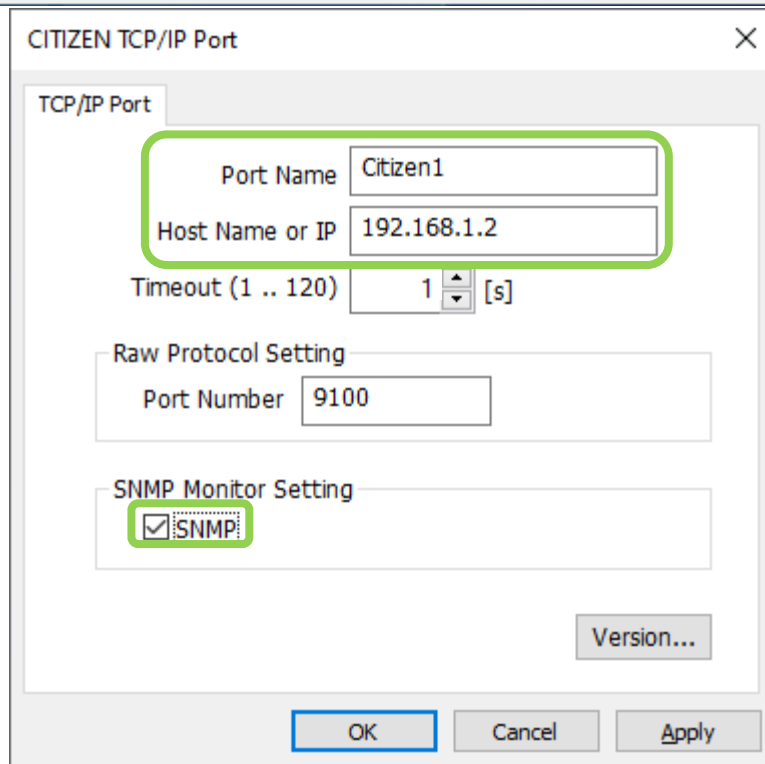
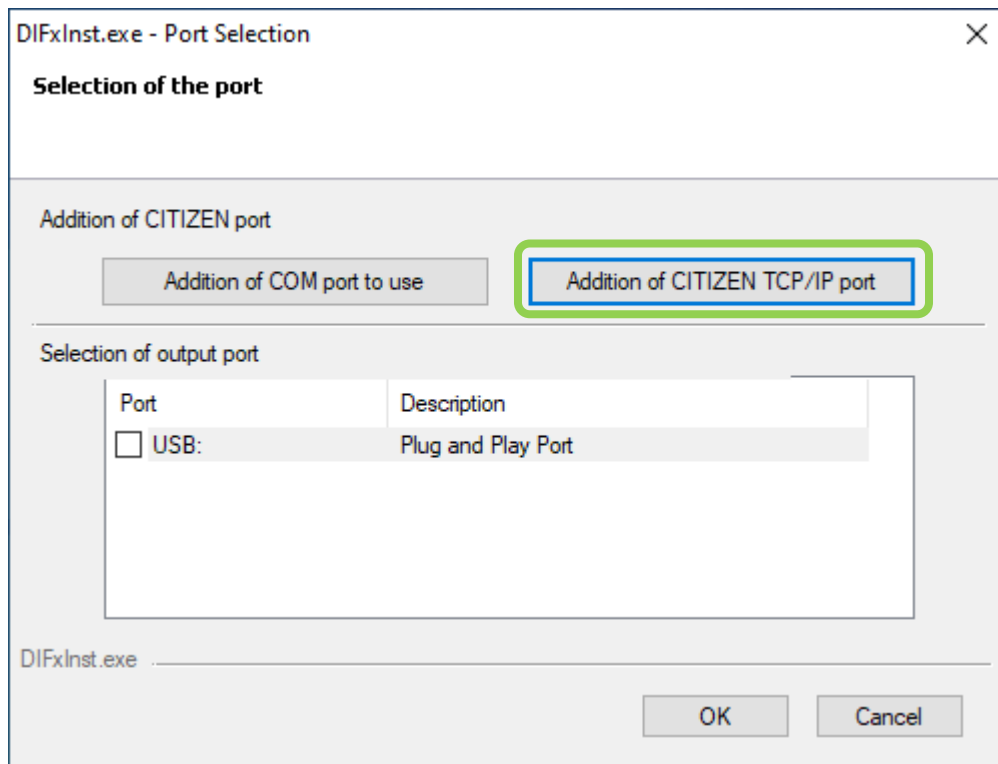
Restarting... Please wait.

Copyright © 2012 CITIZEN SYSTEMS JAPAN CO.,LTD. All rights reserved.

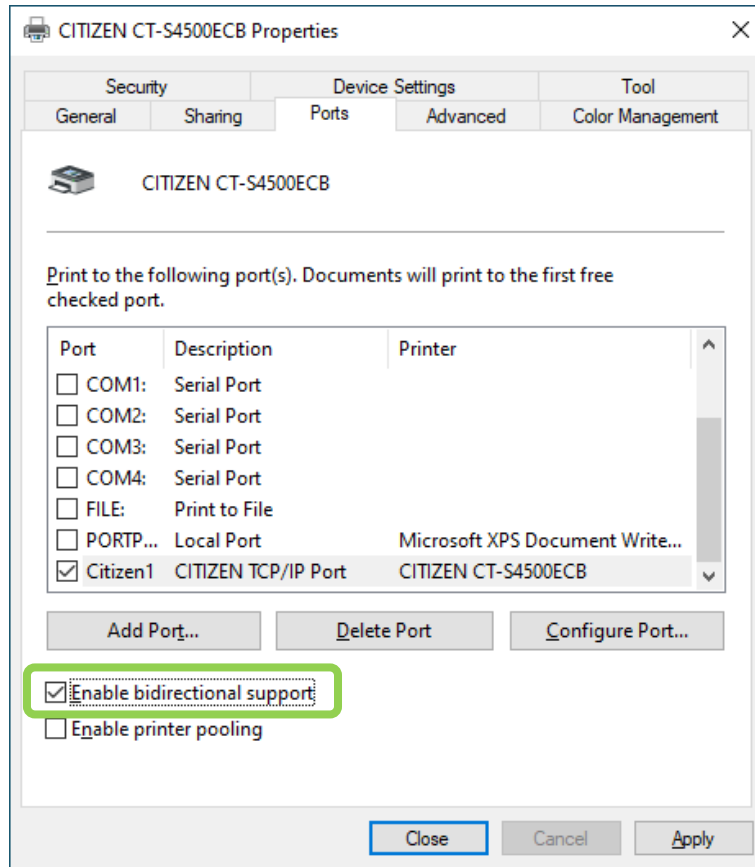
## Configuring the CT-S4500ECB Windows Driver

Load the CT-S4500ECB Windows driver.

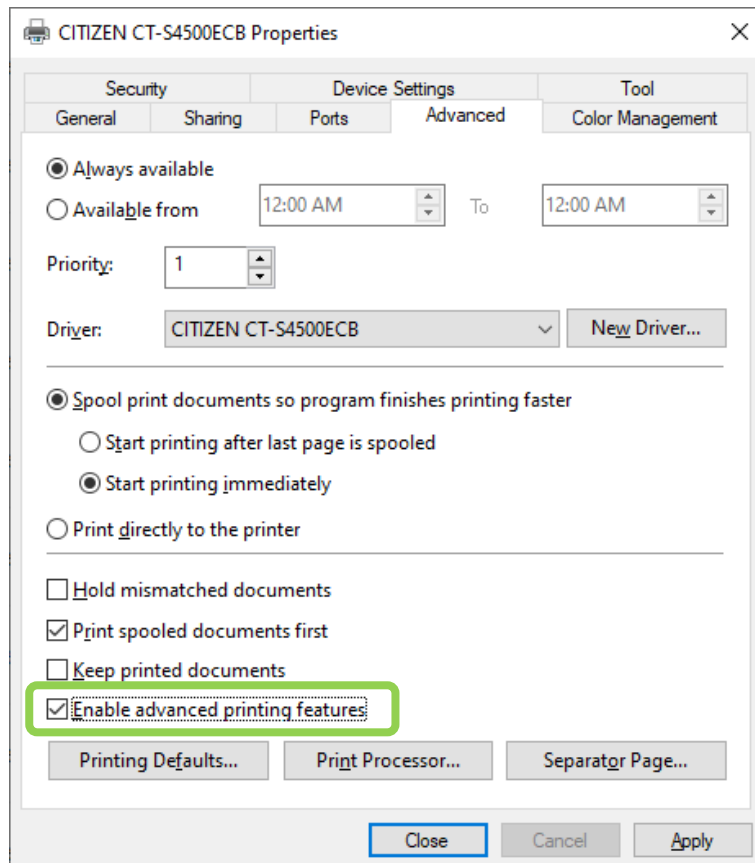
On port selection, select “Addition of CITIZEN TCP/IP port” and enter the printer’s IP.



After successful driver installation, go to Control Panel > Devices and Printers, right click on the CT-S4500ECB driver and select "Printer Properties". Select the "Ports" tab and make sure "Enable bidirectional support" is checked.



Go to "Advanced" tab and make sure "Enable advanced printing feature" is checked as well.



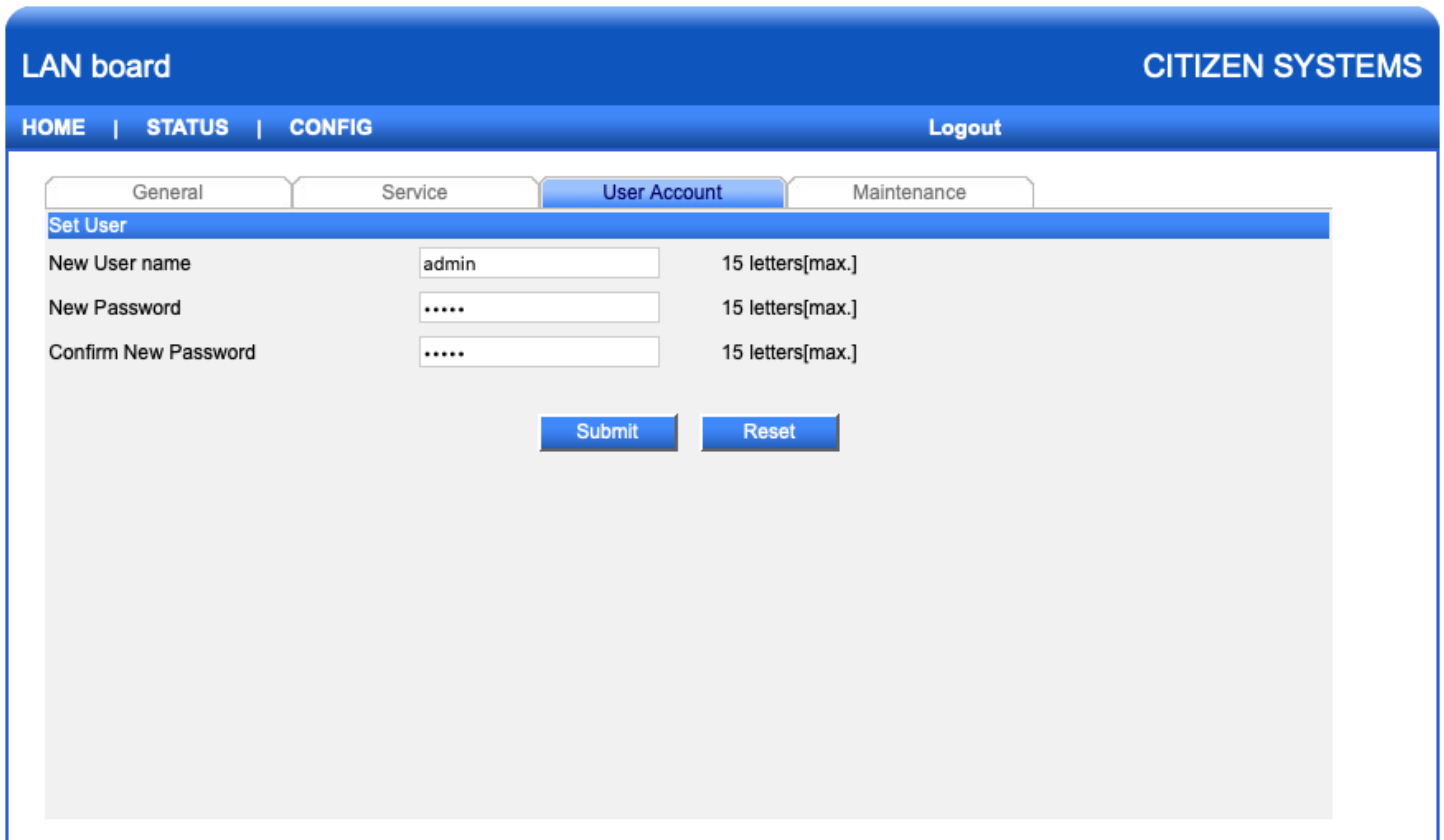
## Changing Username and Password

Go to config tab. The factory default for the username and password is as follow.

Username: admin

Password: admin

To change this, go to “User Account” tab and enter the desired username and password then press submit.



The screenshot displays the LAN board configuration interface for CITIZEN SYSTEMS. The interface has a blue header with "LAN board" on the left and "CITIZEN SYSTEMS" on the right. Below the header is a navigation bar with "HOME | STATUS | CONFIG" and a "Logout" link. The main content area has four tabs: "General", "Service", "User Account", and "Maintenance". The "User Account" tab is selected and highlighted in blue. Underneath the tabs, there is a "Set User" section with three input fields: "New User name" containing "admin", "New Password" containing "\*\*\*\*\*", and "Confirm New Password" containing "\*\*\*\*\*". Each field has a label "15 letters[max.]". At the bottom of the form are two buttons: "Submit" and "Reset".